

2 Zimmer **35,1 m²**

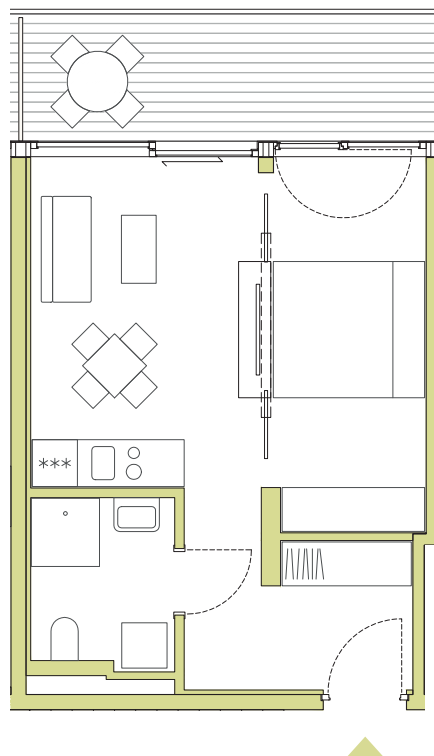
Vorraum 6,54 m²

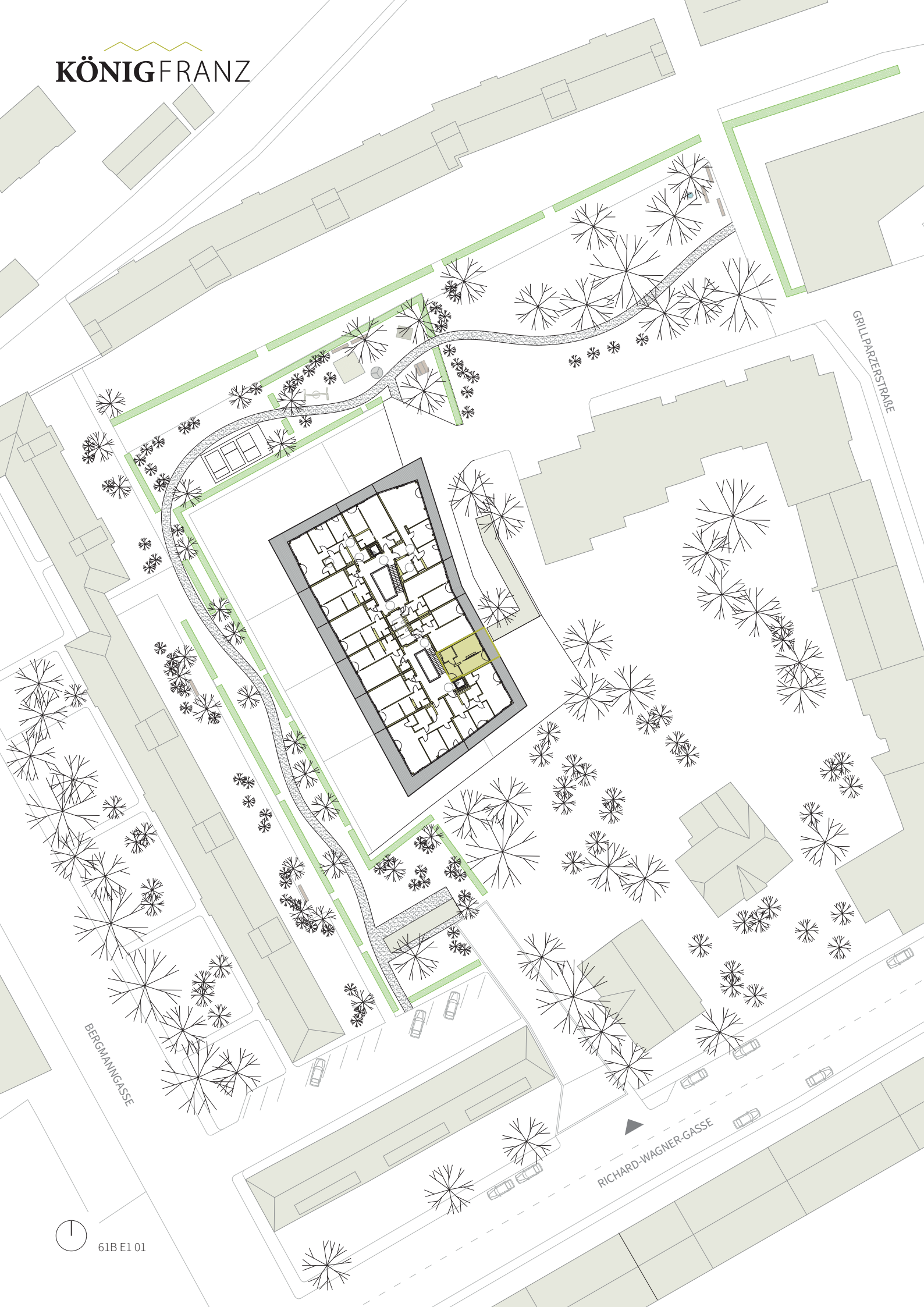
WC Bad 4,23 m²

Kochen Essen Wohnen

Schlafen 24,37 m²

Terrasse 9,03 m²





GRILLPARZERSTRASSE

BERGMANNSGASSE

RICHARD-WAGNER-GASSE



61B E1 01